

Watford Symphony Orchestra

Watford Symphony Orchestra is now firmly established as a major new force in the cultural life of the area.

In our third season, we are proud to announce an exciting new development for local audiences. As well as our popular concerts at Clarendon Muse, we will also stage, for the first time, a New Year's Day Charity Concert at the Colosseum. This will be an enjoyable afternoon concert both for families and regular concert-goers, with a number of entertaining and light-hearted features as well as opportunities for participation; one of the areas' finest soloists will be joining us for a family item. There will be waltzes, but much more as well for all the family to enjoy. Put it in your diary now!

It will continue to be our mission to feature excellent local soloists, often at the outset of their careers, helping to support the incredibly rich local music scene. Most of our concerts will be directed by our resident conductor, Edward Kay, with guest conductor John Brennan, Head of Strings at the Watford School of Music, directing both the New Year's Day and one of our regular concerts at the Muse.

To find out more about the WSO, contact the secretary on 01923 238998. Alternatively, email wso@btinternet.com or visit the website at www.watfordsymphonyorchestra.co.uk

New this season:

New Year's Day Family Extravaganza
Friday 1st January 2010
3pm
Watford Colosseum



Our other concerts are on Saturdays
at **7:45pm**
in the **Clarendon Muse**
(home of the Watford School of Music)
at Watford Grammar School for Boys

Tickets

£9.00

available from the box office
01923 244196

from the website
www.watfordsymphonyorchestra.co.uk

or by email
wso@btinternet.com



Watford
Symphony
Orchestra

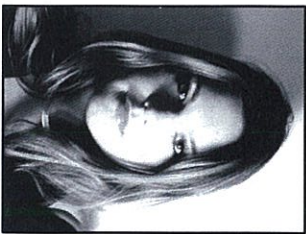
Concerts
2009 – 2010

Conductor: Edward Kay
Leader: Rebecca Boyle

www.watfordsymphonyorchestra.co.uk

Saturday 17th October 2009

A true feast of the best English music: glorious Elgar string writing and vocal music with Vaughan Williams' rich and colourful picture of the Capital.



Elgar
Introduction & Allegro
for strings

Elgar
Sea Pictures
MEZZO SOPRANO:
BETHANY REMFREY

Vaughan Williams
Symphony No. 2 (London)

Saturday 6th March 2010

Bizet's Mediterranean warmth contrasted with the cool strength and sonority of Sibelius, via Tchaikovsky at his most exquisite.



Bizet
L'Arlesienne Suites 1 & 2
(extracts)

Tchaikovsky
Rococo Variations for Cello
CELLIST:
REBECCA HERMAN

Sibelius
Symphony No. 1

Saturday 3rd July 2010

The tempestuous passion of Romeo and Juliet contrasted with Mahler in lyrical mode: 'a child's view of heaven'.



Tchaikovsky
Romeo & Juliet
Overture

Mahler
Symphony No. 4
SOPRANO:
CHARLOTTE BEAMENT

3pm Friday 1st January 2010

Watford Colosseum

New Year's Day

Family Extravaganza

Guest conductor: John Brennan

Great fun and super music to launch your New Year. Ideal both for families and for regular concert goers looking for light-hearted quality music.

Lots of audience interaction
World's most beautiful and popular music
Don't just sit at home, join us for a great afternoon's entertainment. Book the date in your diary now!
Family tickets available
A chance to conduct and much more

Details of ticket prices and how to book this concert will be published separately. For advance information please visit our website or call 01923 238998.

Saturday 24th April 2010

Guest conductor: John Brennan

The most popular concerto ever? Judge for yourself in Wing Yun Wu's exciting performance, coupled with Brahms' final word on the symphony.



Weber
Freischutz Overture

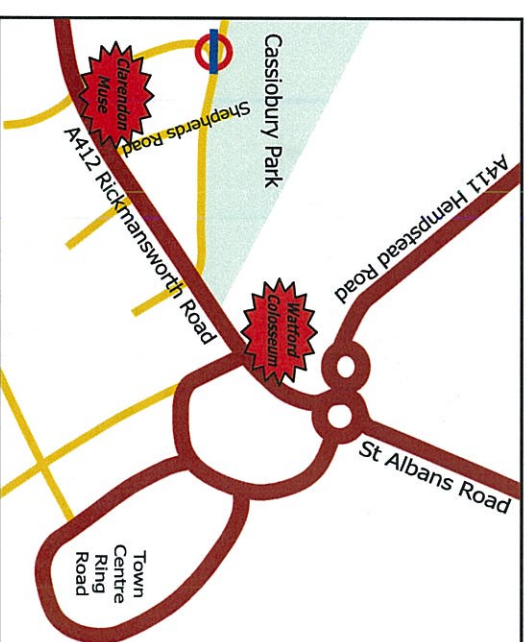
Tchaikovsky
Piano Concerto No. 1
PIANIST:
WING YUN WU

Brahms
Symphony No. 4

Saturday concerts will be held in

The Clarendon Muse

(home of the Watford School of Music)
Watford Grammar School for Boys,
Rickmansworth Road, Watford, WD18 7JF



Via Shepherds Road off Rickmansworth Road

The right is reserved to change the date, content or performers of any concert